

BTS 65

Floor Spring

The economic floor spring specially designed for double action doors

Special shallow design

Optional hold-open

Successfully tailored to satisfy the special requirements governing floor springs for double action doors, the dormakaba BTS 65 also offers a particularly shallow design and thus all the advantages of a reduced installation depth. With two closing ranges and a

choice of models, the BTS 65 can fulfil virtually any application requirement while providing all the reliability associated with assured quality from dormakaba.



Quality assured manufacture to DIN ISO 9001, EN 29001, BS 5750, Certified and verified by BSI Quality Assurance Reg.-No. Q 6423, FM 10756

Plus Points

For the trade

- Outstanding value for money
- Available with complete accessories for different applications

For the installer

- Easy installation thanks to shallow design
- Easy to adapt to individual requirements with dual valve control 130° to 0° and 130° to 20°

For the architect/specifier

- Minimum floor recess dimension
- Rugged construction for door weight up to 100kg

For the user

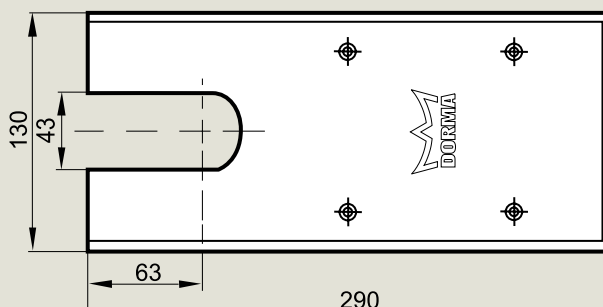
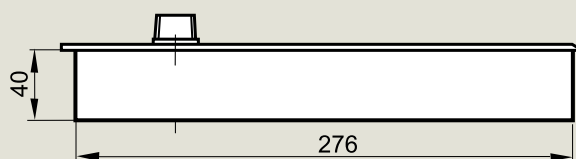
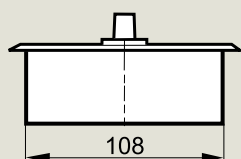
- High mechanical efficiency ensures easy door operation
- Optional integrated single-point hold-open at 90°

Technical Data		BTS 65	
Spring strength	Size	EN 3	EN 4
Standard and external doors ^{1) 2)}	≤ 950 mm	●	–
	≤ 1100 mm	–	●
Max. door weight in kg		100	100
Closing speed variable by valve adjustment		●	●
Backcheck		–	–
Delayed action		–	–
Hold-open point 90°		○	○
Weight in kg, approx.		4.0	4.0
Dimensions in mm	Length	276	276
	Width	108	108
	Height	40	40
Door closer tested to EN 1154		●	●

● Yes – No ○ Optional

- 1) For applications involving particularly high or heavy doors, and doors which have to close against wind or draught conditions, the next larger closer size or the dormakaba BTS 80 should be selected.
- 2) Max. opening 130°. Door stop necessary for doors which can open further than 130°. (e.g. Door Stop TZ 5000).

Dimensions



Standard and optional functions

Closing ranges

The floor spring has two controlled closing ranges:

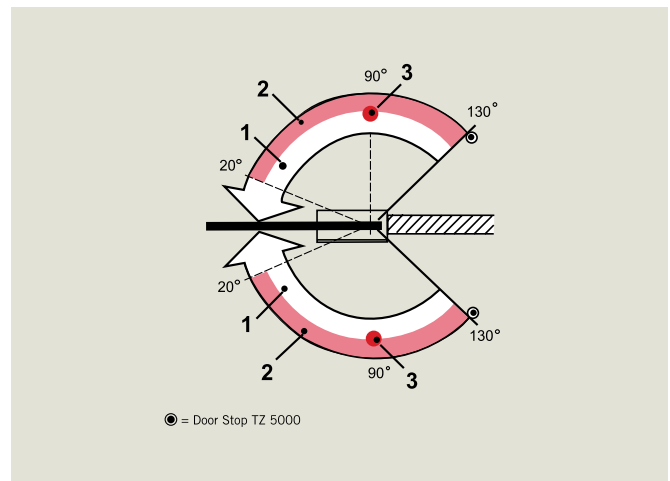
Valve 1: 130° - 0° sweep

Valve 2: Increases the closing speed between 130° and 20°

Hold-open

With optional integrated single-point hold-open at 90°.

1. Infinitely variable closing speed in the range 130° - 0°
2. Second closing range 130° - 20°
3. Hold open at 90° (optional extra)



Applications and installation

The practical clamp fixing system of the dormakaba BTS 65 ensures a secure and high-precision fit in the cement box.

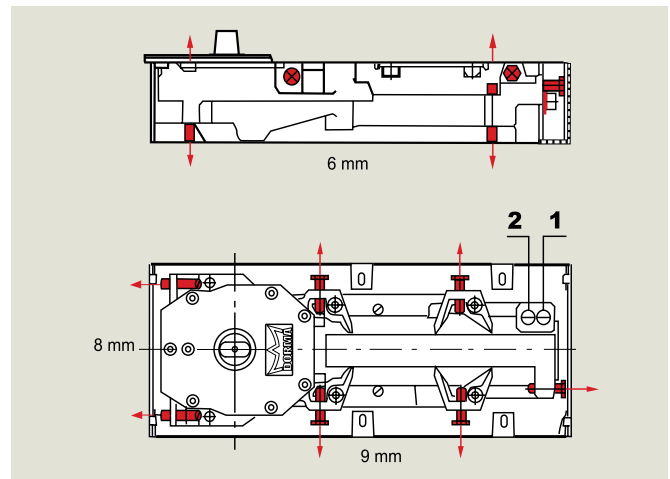
The adjustment range in the cement box is as follows:

Transverse 9mm

Longitudinal 8mm

Vertical 6mm

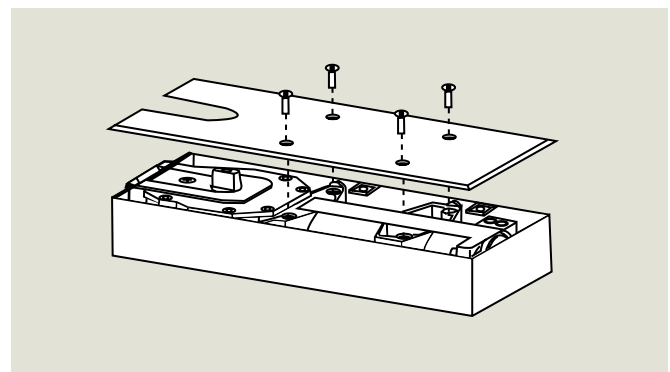
1. Valve for 130° - 0° closing speed adjustment
2. Valve for increasing the 130° - 20° closing speed



Accessories

BTS 65 floor spring with 5mm extended fixed spindle, includes cement box and stainless steel cover plate.

Optional special cover plate with extended fixing screw facilities fitting BTS 65 in existing BTS 84 cement box.



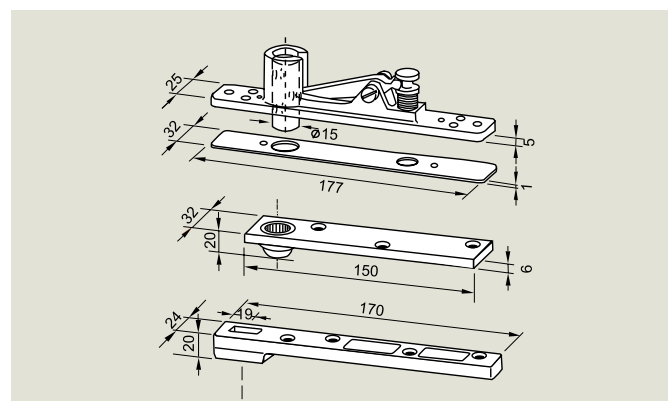
Double action accessories

Double action accessories for the following applications:

- timber doors
- steel doors
- aluminum doors

Double action accessories include:

- top centre upper part
- cover plate
- top centre lower part
- bottom strap





www.dormakaba.com.sg



**Door
Hardware**



**Entrance
Systems**



**Electronic
Access & Data**



**Interior Glass
Systems**



**Lodging
Systems**



**Mechanical
Key Systems**



Safe Locks



Services

dormakaba Singapore
12 Tukang Innovation Drive #04-01
Tel: +65 6268 7633

dormakaba Malaysia
(Malaysia/Brunei)
Tel: +603 8081 8009

PT dormakaba Access Indonesia
Tel: +62 21 2930 3762

dormakaba Philippines
Tel: +63 2 893 4077

dormakaba Thailand
(Thailand/Cambodia/
Myanmar/Laos)
Tel: +66 2059 2612

dormakaba Vietnam Rep Office
Tel: +84 903 823 111

BTS 65 Floor Spring, #1410141 (09/19 BK)
Subject to change without notice.